



SRI SIVANI COLLEGE OF PHARMACY

(Under the Management of Sri Sivani Educational Society, Srikakulam)
(Estd.2007, Approved by PCI-New Delhi and Affiliated to JNTU, Gurajada-Vizianagaram)
N.H-16, Chilakapalem Jn., Etcherla Mandal, Srikakulam Dist - 532402.

GAINT CALOTROPE

BOTINICAL NAME: *CALOTROPIS GIGANTEA*

FAMILY: Apocynaceae

SYNONYMS:

ENGLISH: *Asclepias gigantea*

HINDI: Vishaal kailotrop

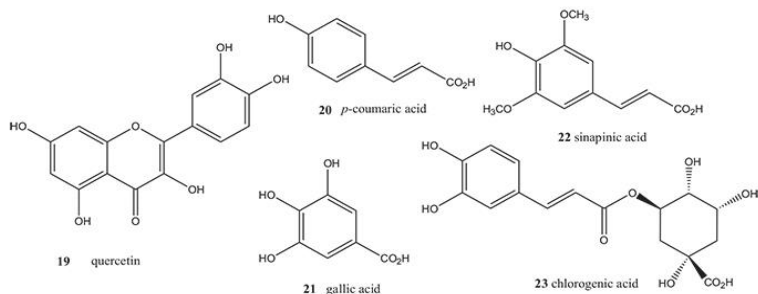
TAMIL: Māperumkalōṭrōp

TELUGU: Pedda kelōṭrōp



CHEMICAL CONSTITUENTS:

- ❖ *Calotropis gigantea* plant contain chemical constituents in which cardenolides, flavonoids, terpenes, pregnanes and nonprotein amino acid and more in various concentration.



USES:

- ❖ Effective in treating skin
- ❖ Digestive
- ❖ Respiratory
- ❖ Circulatory and neurological disorder
- ❖ It was used to treat fevers
- ❖ Elephantiasis
- ❖ Nausea, vomiting, and diarrhea
- ❖ The milky juice of *Calotropis procera* was used against arthritis
- ❖ Cancer
- ❖ And acts as an antidote for snake bite